



**THE  
COATINGS  
EXPERT®**

# **PROTECTIVE COATINGS**

**HEAVY DUTY COATINGS FOR INDUSTRIAL**

**Protect your  
steel structures with  
ASIA'S NO.1  
PAINT BRAND**

# CONTENTS

## CONVENTIONAL PROTECTIVE COATINGS

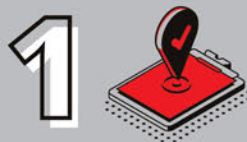
<b>Alkyd Primer</b>	Conventional Metal Primer - Nippon Red Oxide Primer & Nippon Zinc Phosphate Primer FD	<i>pg03</i>
<b>Alkyd Finish</b>	Nippon Aluminium Paint Nippon Micaceous Iron Oxide (MIO) Nippon Protective Finish FD	<i>pg04</i>
<b>Galvanized Steel</b>	Nippon Etching Primer 120 Nippon Galvaprimer Nippon PVB Tech Primer	<i>pg05</i>
<b>Special Niche Products</b>	Nippon 300 High Temperature Primer & Finish Nippon 600 High Temperature Primer & Finish Nippon Bituminous Solution	<i>pg06</i>

## HEAVY-DUTY PROTECTIVE COATINGS

<b>Epoxy Zinc Primer</b>	Organic Zinc Rich Primer - Nippon Zinc Rich Primer HS / Nippe zinc E2 Primer Inorganic Zinc Primer - Nippon NIOZ	<i>pg07</i>
<b>Internal Tank Epoxy Coating</b>	Nippon EA9 Red Oxide Primer Nippon EA9 Finish HB	<i>pg08</i>
<b>Heavy-Duty &amp; Immersed Epoxy Coating</b>	Nippon 9049 /Nippon 9049 GF Nippon Arocoat	<i>pg09</i>
<b>Telecommunication Tower Coating</b>	Nippon Protective Acrylic Red Oxide Primer & Finish	<i>pg10</i>
<b>Universal Surface Tolerant Epoxy Primer</b>	Nippon 8048 Zinc Phosphate Primer QD Nippon 8048 Nippon 8048 MIO	<i>pg11</i> <i>pg12</i>
<b>Light Duty Floor Coating</b>	Nippon Penetrative Epoxy Primer Nippon EA4 Finish	<i>pg13</i>
<b>UV-Resistant Top Coat Finishing</b>	Nippon Polyurethane Recoatable Finish	<i>pg14</i>
<b>Project Reference</b>		<i>pg15-16</i>
<b>Coating System</b>		<i>pg17-22</i>

**NIPPON PAINT**

**As Your  
Protective  
Coating  
Partner**



**1**  
**Trusted brand for  
more than 50 years  
in Malaysia**

We offer Total Coating Solutions for multiple segments, multiple industries and multiple surfaces.



**2**  
**Quality in  
every drop**

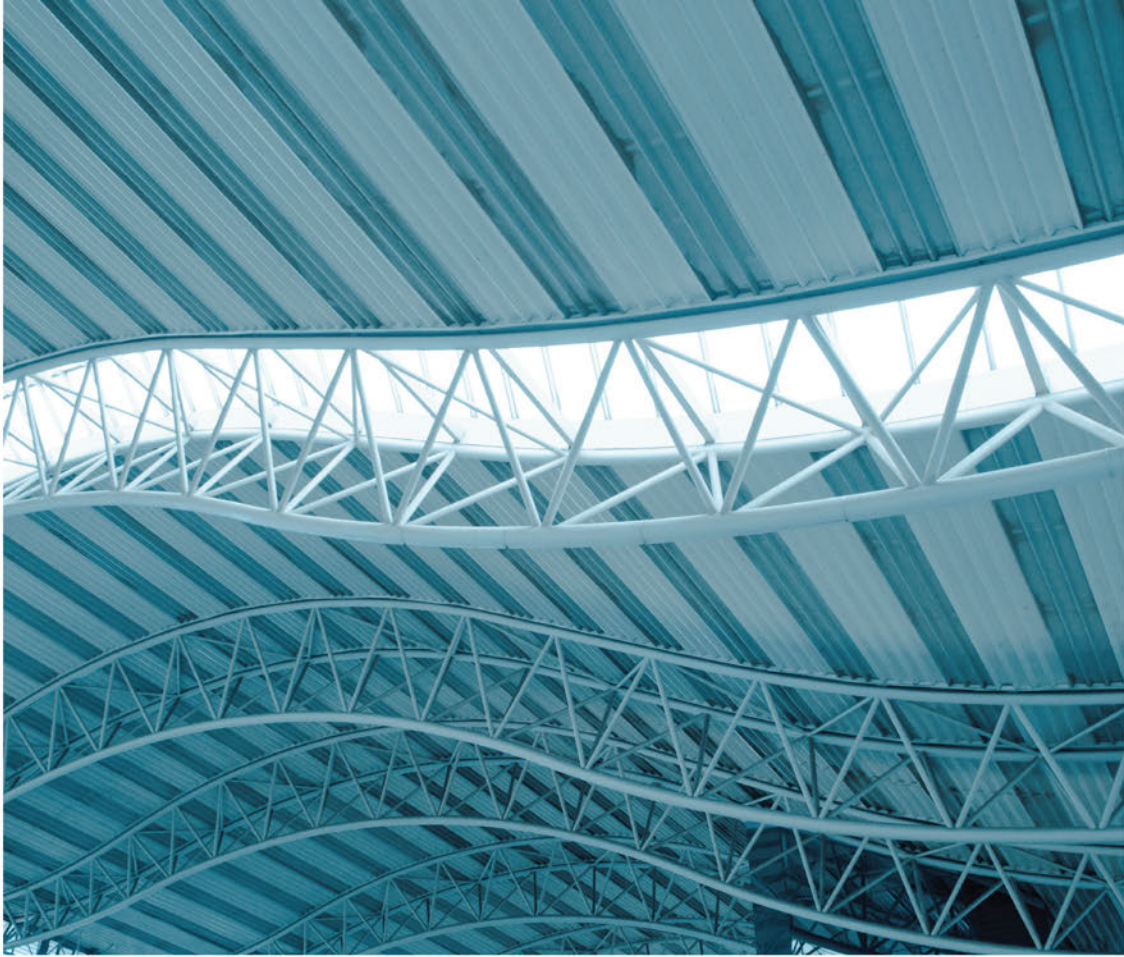
It is our commitment to innovation in research and development (R&D), adhering a stringent quality control in all our products.



**3**  
**Service  
excellence**

We have our dedicated and proactive sales & technical team that address to all your queries.





“

# PROTECTIVE COATINGS

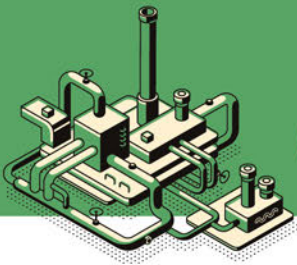
**Specially formulated anti-corrosion solution**

”

Protect surfaces that are highly prone to corrosion, rust and the detrimental effects of the environment with our anti-corrosion solutions, which encompass both conventional and heavy-duty type coatings.

Our protective coatings is ideal for any metal surfaces such as structural steelworks, storage tanks (for edible products, fuel, oil, water and etc.), pipes, piles, vessels and metal bridges.





## CONVENTIONAL PROTECTIVE COATINGS

Alkyd Primer

This category is air dry alkyd-based and normally requires simple surface preparation such as hand scrubbing with wire brush or mechanical power tool. It is specially formulated to provide protection against corrosion for surfaces under normal service condition exposed to an environment of light moisture condensation and presence of mild corrosive chemical.

### Conventional Metal Primer – Nippon Red Oxide Primer & Nippon Zinc Phosphate Primer FD

Alkyd-based fast drying rust inhibitive primer is designed for application on wire brushed/power tooled steel surfaces under non-immersion condition to prevent rust formation. It can be overcoated with most alkyd finishes and alkyd micaceous iron oxides such as Protective Finish FD and Micaceous Iron Oxide as intermediate and top coats.

#### Nippon Red Oxide Primer

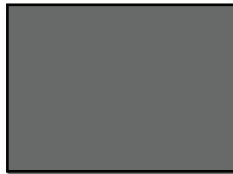


Reddish Brown

#### Nippon Zinc Phosphate Primer FD



Grey Green



Light Grey



Reddish Brown





## Nippon Aluminium Paint

Nippon Aluminium Paint is a high-quality solvent-based paint. It can be used on all types of suitably primed interior and exterior metal surfaces.



## Nippon Micaceous Iron Oxide (MIO)

Alkyd-based coating pigmented with micaceous iron oxide. Being resistant to atmospheric pollution, high humidity and mild chemical fume attack, it gives protection to the interior and exterior of steelwork, typically in the mild marine and industrial environment. Exhibits a matt finish with a metallic lustre. It can be used as a finish topcoat on its own.



Silver



Dark Grey



Grey Black



Neptune Blue



Neon Green

## Nippon Protective Finish FD

Nippon Protective Finish FD is a finish coating based on a combination of oil modified alkyd and a special synthetic resin. It has excellent weathering resistance and is recommended as finishing coat for steel structure and iron surfaces under non-immersion condition.



Flamingo 1402



Sun Flower 1505



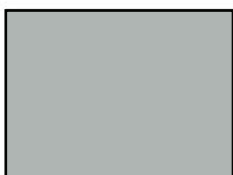
Crystal Mint 1222



Paradise Blue 1365



Wira Blue 1471



Lavender Grey 1307



Slate 1325



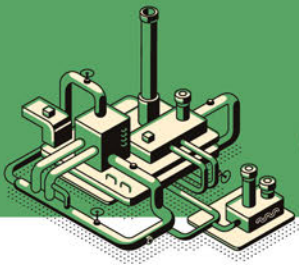
Papier Grey 1139



White 1145



Black 1144



## CONVENTIONAL PROTECTIVE COATINGS



Galvanized Steel

### Nippon Etching Primer 120 / Nippon Galvaprimer

Nippon Etching Primer 120 and Nippon Galvaprimer are two-pack polyvinyl butyral-based, acid-catalysed etching primers. A must for galvanised steel and light alloys before application of other topcoats. It gives excellent adhesion to galvanised steel and light alloys which provides a suitable base for most of the coatings to adhere satisfactorily.

#### Nippon Etching Primer 120



#### Nippon Galvaprimer



### Nippon PVB Tech Primer

Nippon PVB Tech Primer is a single-pack modified polyvinyl butyral, acid-catalysed etching primer. It is a fast-drying primer with excellent adhesion, suitable for steel, galvanised steel and light alloys.

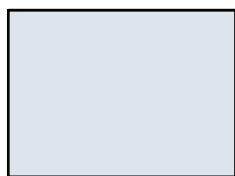


## Nippon 300 High Temperature Primer & Finish/ Nippon 600 High Temperature Primer & Finish

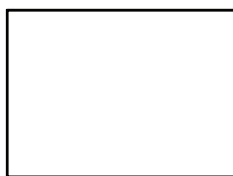
A special solvent-based silicone acrylic paint suitable for use on interior and exterior ferrous surfaces subject to high heat (with respective range of maximum operational substrate temperature as the name indicates). Contains aluminum paste which gives excellent corrosion protection. Must be use with their respective primer.



300/600 HT Primer



Aluminium



White\*



Red\*

*\*Not available for 600 High Temperature Finish*



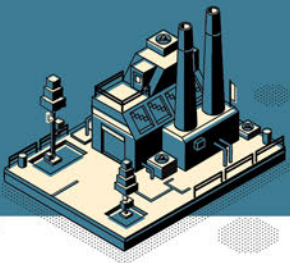
## Nippon Bituminous Solution

Excellent wetting and water-resistant properties that provides an excellent finish for internal lining of water tanks.



Black





## HEAVY-DUTY PROTECTIVE COATINGS

Epoxy Zinc Primer

Comprehensive coating solutions specially formulated to provide protection against corrosion for surfaces under severe service condition exposed to an environment of medium to high condensation and presence of corrosive chemicals.

### Organic Zinc Rich Primer – Nippon Zinc Rich Primer HS / Nippe zinc E2 Primer

A two-pack epoxy zinc rich primer which can be applied on commercial abrasive blasted standard (SSPC-SP 10, Sa 2.5) steel for cathodic protection. Ideal as touch-up primer and can be applied by brush or roller.

#### Nippon Zinc Rich Primer HS



#### Nippe zinc E2 Primer



### Inorganic Zinc Primer – Nippon NIOZ

A two-pack solvent based which can be applied on commercial abrasive blasted standard (SSPC-SP 10, Sa 2.5) base coating based on ethyl silicate and zinc dust. It prevents corrosion and provides excellent resistance to weathering, abrasion, impact, heat and many solvents, making it suitable for on commercial abrasive blasted standard (SSPC-SP 10, Sa 2.5) for severe corrosive services.



## Nippon EA9 Red Oxide Primer

A two-pack high-build amine adduct cured food grade epoxy primer. It can be overcoated with food grade epoxy finish, Nippon EA9 Finish HB for coating of most of the edible storage tanks.

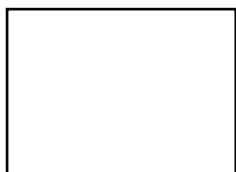


## Nippon EA9 Finish HB

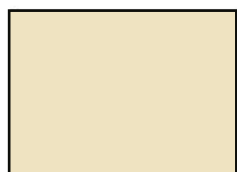
A two-pack high-build amine-adduct cured food grade epoxy finish. It is designed as an intermediate or finishing coat for the internal coating of edible storage tanks and interior primed steel. It can be painted directly on masonry, galvanized surfaces and non-ferrous metal i.e. aluminum and light alloys. It can also be recommended as a hard, thick barrier coat which can act as a finishing for storage tank.



Executive Grey 0104



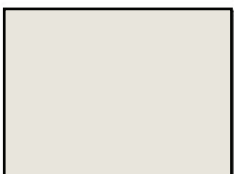
White BS 9102



Ivory BS 4052



Misty Grey 1457



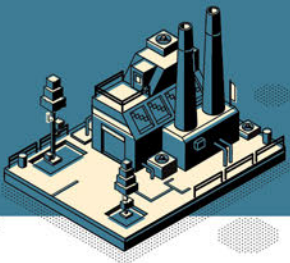
Ash Grey BS 9093



Calm Green BS 6070



Black BS 9103



## HEAVY-DUTY PROTECTIVE COATINGS

### Nippon 9049 / Nippon 9049 GF\*

A two-packed epoxy cycloaliphatic amine coating that act as a high build primer and a self-priming finish with excellent corrosion resistance. (Nippon 9049 GF\* is reinforced with glass flakes)



RAL 9005



Reddish Brown\*



RAL 7047



N7.0\*

\*Colours available for 9049 GF



### Nippon Arocoat

A two-pack high-build coal tar epoxy coating, which provides excellent protection against corrosive chemicals and resistance against salt and fresh water.



Brown



Black





## Nippon Protective Acrylic Red Oxide Primer & Finish

Single-pack acrylic semi-gloss with good durability against exterior weathering. The detergent resistance and washable finish makes maintenance cleaning in high traffic area easy.



Protective Acrylic Red Oxide Primer

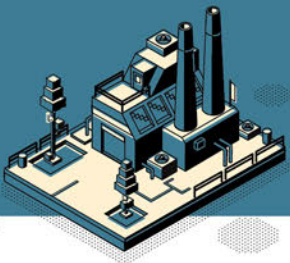


Tower Red 148\*\*



White 145\*\*

\*\*Approved by The Civil Aviation Authority of Malaysia (Previously known as Department of Civil Aviation (DCA))



## HEAVY-DUTY PROTECTIVE COATINGS

### Nippon 8048 Zinc Phosphate Primer QD

A two-pack high build surface/tolerant epoxy coating that combines superior barrier properties with excellent wetting, adhesive characteristics and low VOC.



Reddish



Pearl Grey

### Nippon 8048

Surface tolerant/mastic and low VOC, high performance advanced technology semi-gloss mastic. As a multi-purpose mastic with high volume of solids. It provides excellent corrosion protection and resistance against oil, solvents, chemicals, splashes and spillages.



Aluminium 1463



Straw Cream 1134



Marble Grey 0104



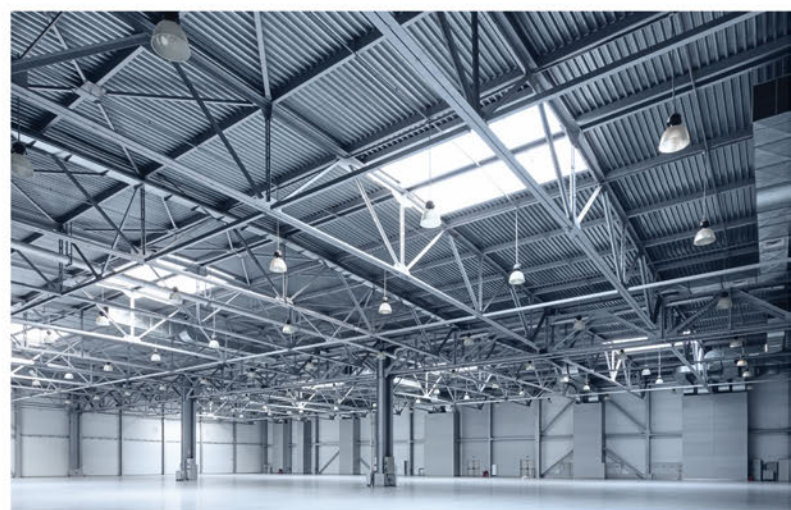
Indian Red 1462



Off White



RAL 7035







## Nippon 8048 MIO

Two-pack epoxy polyamide coating pigmented with micaceous iron oxide that provides a high build impervious barrier that gives excellent adhesion and surface wetting properties. It has unique combination of anti-corrosion pigments, and rust penetrants giving it excellent corrosion resistance in virtually any environment.



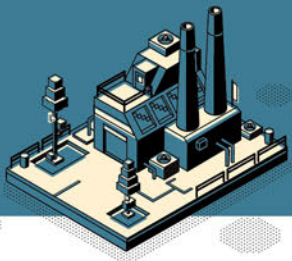
Light Grey



Silver



Dark Grey



# HEAVY-DUTY PROTECTIVE COATINGS

Light Duty Floor Coating

## Nippon Penetrative Epoxy Primer

Two-pack amidoamine cured epoxy finish for use on concrete floor surfaces, which provide good adhesion to the substrate. Acid-treatment should be done prior to application. It is suitable for use as a tie coat between concrete substrate and solvent-based topcoat, such as NP EA4 FINISH.

## Nippon EA4 Finish

Two-pack amine adduct cured epoxy finish with hard-wearing, chemical-resistant and excellent abrasion resistance for steel structures. The glossy and smooth finish is suitable for use in areas subjected to high level of abuse and aggressive chemicals with ease of maintenance and cleaning.



Ash Grey BS 9093



Ivory BS 4052



Executive Grey 0104



Misty Grey 1457



Fern Green 1460



Dark Green 1458



Evergreen 1461



Lime Green 1459



Calm Green BS 6070



Blue 0139



Bright Blue 0632



Orange 0823\*



Yellow 0668\*



Indian Red 0882\*



White BS 9102



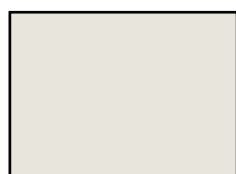
Black BS 9103

Use of EP Hardener when overcoat on Nippon 8048 series Product  
\*Premium Colours



## Nippon Polyurethane Recoatable Finish

Two-pack aliphatic acrylic PU glossy finish for exterior and interior surfaces. This high-performance finish has excellent resistance to abrasion, scratches, impact, condensing humidity, staining and splashes of chemicals.



Ash Grey BS 9093



Ivory BS 4052



Executive Grey 0104



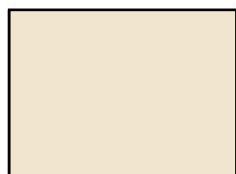
Misty Grey 1457



RAL 7035



Venus 1406



Pearl 1301



Grass Green 218



Calm Green BS 6070



Black BS 9103



French Blue BS 381C166



Sky Blue RAL 5015



Paradise Blue 1365



Traffic Yellow RAL 1023



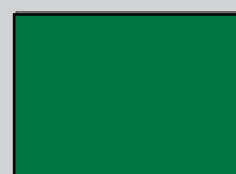
White BS 9102



▲ Signal Red BS 537



▲ Golden Yellow BS 356



▲ Signal Green RAL 6032



▲ International Orange BS 592

▲ Signal Colours

# PROJECT REFERENCE

We are proud to be involved in the thousands of completed projects across Malaysia over the years. Here are some projects that used our coating solution to create their strong coat of reputation.







*Manjung 4 Turbine Hall, Perak*



*Kapar Energy Ventures Power Plant, Selangor*



*Kuala Lumpur Convention Centre, Kuala Lumpur*



*Kimanis Power Plant, Sarawak*



*KVMRT Sungai Buloh Depot, Selangor*



*Kellogg's Factory, Negeri Sembilan*



# COATING SYSTEM

COATING SYSTEM		PRODUCTS	PRODUCTS	RECOMMENDED SURFACE PREPARATION
NPM 1	Primer	Nippon Zinc Phosphate Primer FD	Alkyd Zinc Phosphate	St 3 or SSPC-SP 3
	Intermediate	Nippon Protective Finish FD	Alkyd Gloss Enamel	
	Finish	Nippon Protective Finish FD	Alkyd Gloss Enamel	
NPM 2	Primer	Nippon Zinc Phosphate Primer FD	Alkyd Zinc Phosphate	St 3 or SSPC-SP 3
	Intermediate	Nippon Micaceous Iron Oxide (MIO)	Alkyd Micaceous Iron Oxide	
	Finish	Nippon Protective Finish FD	Alkyd Gloss Enamel	
NPM 3	Primer	Nippon Zinc Phosphate Primer FD	Alkyd Zinc Phosphate	St 3 or SSPC-SP 3
	Intermediate	Nippon Micaceous Iron Oxide (MIO)	Alkyd Micaceous Iron Oxide	
	Finish	Nippon Micaceous Iron Oxide (MIO)	Alkyd Micaceous Iron Oxide	
NPM 4	Primer	Nippon Zinc Phosphate Primer FD	Alkyd Zinc Phosphate	St 3 or SSPC-SP 3
	Intermediate/ Finish	Nippon Aluminium Paint	Linseed/Phenolic Aluminium Paint	
NPM 5	Primer	Nippon Etching Primer 120/ Nippon Galvaprimer / Nippon PVB Tech Primer	Two-pack Polyvinyl-butylal acid etching coat	SSPC-SP 1
	Finish	Nippon Protective Finish FD	Alkyd Gloss Enamel	
NPM 6	Primer	Nippon EA9 Finish HB	Amine Adduct Cured Epoxy	SSPC-SP 1
	Finish	Nippon Polyurethane Recoatable Finish	Two-pack Aliphatic PU Finish	
NPM 7	Primer	Nippon Zinc Rich Primer HS	Two-pack Epoxy (Organic) Zinc Coating	Sa 2.5 or SSPC-SP 10
	Intermediate	Nippon 8048	Two-pack Epoxy High Build/Epoxy Mastic	
	Finish	Nippon Polyurethane Recoatable Finish	Two-pack Aliphatic PU Finish	
NPM 8	Primer	Nippon Zinc Rich Primer HS	Two-pack Epoxy (Organic) Zinc Coating	Sa 2.5 or SSPC-SP 10
	Intermediate	Nippon 8048	Two-pack Epoxy High Build/Epoxy Mastic	
	Finish	Nippon EA4 Finish (EP)	Two-pack Amine adduct Cured Epoxy Finish	



RECOMMENDED DRY FILM THICKNESS IN MICRONS	TYPES OF SUBSTRATE													ADDITIONAL INFORMATION
	FOR NEW PAINTING SYSTEM	FOR REPAINTING SYSTEM	STEEL STRUCTURE - EXTERIOR	STEEL STRUCTURE - INTERIOR	GALVANISED STEELWORK (GI) - EXTERIOR	GALVANISED STEELWORK (GI) - INTERIOR	CERAMIC ROOF TILE / METAL ROOFING - EXTERIOR	CERAMIC ROOF TILE / METAL ROOFING - INTERIOR	INTERNAL TANK COATING	MASONRY - EXTERIOR	MASONRY - INTERIOR	CONCRETE FLOOR (INTERIOR)	STEELWORK (HIGH TEMPERATURE)	
45														Nippon Zinc Phosphate Primer FD can be replaced by other conventional metal primers e.g Nippon Red Oxide Primer.
40	•	•	•	•										For Nippon Protective Finish FD colours, please refer to Nippon 9000 Gloss Finish chart.
40														
45														Nippon Zinc Phosphate Primer FD can be replaced by other conventional metal primers e.g Nippon Red Oxide Primer.
50	•	•	•	•										For Nippon Protective Finish FD colours, please refer to Nippon 9000 Gloss Finish chart.
45														
45	•	•	•	•										Nippon Zinc Phosphate Primer FD can be replaced by other conventional metal primers e.g Nippon Red Oxide Primer.
50	•	•	•	•										
50														
45														Nippon Zinc Phosphate Primer FD can be replaced by other conventional metal primers e.g Nippon Red Oxide Primer.
2x35	•	•	•	•										
12	•				•	•								For normal service environment, Nippon Etching Primer 120 or Nippon PVB Tech Primer can also be used.
2x40														
2x50														Recommended for corrosive service environment.
50	•				•	•								
75														Nippon Zinc Rich Primer HS can be replaced by Nippe zinc E2 Primer (Organic Zinc Coating) and Nippon NIOZ (Inorganic Zinc Coating).
125	•		•	•										
50														
75														Nippon Zinc Rich Primer HS can be replaced by Nippe zinc E2 Primer (Organic Zinc Coating) and Nippon NIOZ (Inorganic Zinc Coating).
125	•			•										Epoxy Finish is not recommended for exterior exposure service condition due to its natural tendency to chalk under sunlight (UV).
50														

# COATING SYSTEM

COATING SYSTEM	PRODUCTS		PRODUCTS	RECOMMENDED SURFACE PREPARATION
NPM 9	Primer	Nippon 8048 Zinc Phosphate Primer QD	Two-pack Epoxy Zinc Phosphate	Sa 2.5 or SSPC-SP 10/St3
	Intermediate	Nippon 8048/8048 MIO	Two-pack High Build Epoxy/ Epoxy MIO Mastic	
	Finish	Nippon Polyurethane Recoatable Finish	Two-pack Aliphatic PU Finish	
NPM 10	Primer	Nippon 8048 Zinc Phosphate Primer QD	Two-pack Epoxy Zinc Phosphate	Sa 2.5 or SSPC-SP 10/St3
	Intermediate	Nippon 8048/8048 MIO	Two-pack High Build Epoxy/ Epoxy MIO Mastic	
	Finish	Nippon EA4 Finish (EP)	Two-pack Amine Adduct Cured Epoxy Finish	
NPM 11	Primer	Nippon 8048	Two-pack surface tolerant epoxy mastic	Sa 2.5 or SSPC-SP 10/St3
	Intermediate	Nippon 8048/8048 MIO	Two-pack High Build Epoxy/ Epoxy MIO Mastic	
	Finish	Nippon Polyurethane Recoatable Finish	Two-pack aliphatic PU Finish	
NPM 12	Primer	Nippon 8048	Two-pack surface tolerant epoxy mastic	Sa 2.5 or SSPC-SP 10/St3
	Intermediate	Nippon 8048/8048 MIO	Two-pack High Build Epoxy/ Epoxy MIO Mastic	
	Finish	Nippon EA4 Finish (EP)	Two-pack amine adduct cured epoxy finish	
NPM 13	Primer	Nippon EA9 Finish HB	Amine adduct cured epoxy	Sa 2.5 or SSPC-SP 10
	Intermediate	Nippon EA9 Finish HB	Amine adduct cured epoxy	
	Finish	Nippon Polyurethane Recoatable Finish	Two-pack aliphatic PU finish	
NPM 14	Primer	Nippon EA9 Finish HB	Amine adduct cured epoxy	SSPC SP-1
	Intermediate	Nippon EA9 Finish HB	Amine adduct cured epoxy	
	Finish	Nippon Protective Acrylic Finish	Single pack solvent based acrylic finish	
NPM 15	Primer	Nippon Arocoat	Coal tar epoxy	Dust free for masonry. For steel Sa 2, Sa 1, St 3 or SSPC-SP 3
	Finish	Nippon Arocoat	Coal tar epoxy	
NPM 16	Primer	Nippon EA9 Red Oxide Primer	Amine adduct cured epoxy primer	Sa 2.5 or SSPC-SP 10
	Intermediate	Nippon EA9 Finish HB	Amine adduct cured epoxy finish for tank coating	
	Finish	Nippon EA9 Finish HB	Amine adduct cured epoxy finish for tank coating	



RECOMMENDED DRY FILM THICKNESS IN MICRONS	TYPES OF SUBSTRATE												
	FOR NEW PAINTING SYSTEM	FOR REPAINTING SYSTEM	STEEL STRUCTURE - EXTERIOR	STEEL STRUCTURE - INTERIOR	GALVANISED STEELWORK (GI) - EXTERIOR	GALVANISED STEELWORK (GI) - INTERIOR	CERAMIC ROOF TILE / METAL ROOFING - EXTERIOR	CERAMIC ROOF TILE / METAL ROOFING - INTERIOR	INTERNAL TANK COATING	MASONRY - EXTERIOR	MASONRY - INTERIOR	CONCRETE FLOOR (INTERIOR)	STEELWORK (HIGH TEMPERATURE)
100													
100	•	•	•	•	•	•							
50													
100													
100	•	•		•		•							
50													
100													
100	•	•	•	•	•	•							
50													
100													
100	•	•		•		•							
50													
50													
75	•	•			•	•	•	•		•	•		
50													
50													
75	•	•				•		•		•			
50													
150	•	•								•			
150													
60	•			•		•							
120										•			
120											•	•	

## ADDITIONAL INFORMATION

Nippon 8048 Zinc Phosphate Primer QD can be replaced by Nippon 8048-1462 Indian Red.

Nippon 8048 Zinc Phosphate Primer QD can be replaced by Nippon 8048-1462 Indian Red.

Epoxy Finish is not recommended for exterior exposure service condition due to its natural tendency to chalk under sunlight (UV).

For primer coat, Nippon 8048-1462 Indian Red colour is recommended.

For primer coat, Nippon 8048-1462 Indian Red colour is recommended.

Epoxy Finish is not recommended for exterior exposure service condition due to its natural tendency to chalk under sunlight (UV).

This system can be used for Galvanised Steelworks (GI) - Exterior & Interior with surface preparation SSPC-SP1 (Solvent Cleaning).

For repainting system on steel structure and metal roofing, wirebrush to St3, touch up primer Nippon 8048-1462 Red Indian of 60 microns dry film thickness is recommended.

For repainting system on masonry surfaces, the old coating system must be a two-pack chemical cured coating material.

Recommended on sheet pile. Can be used on steel substrate which are buried or shaded where low budget and long term protection are required. Also used in waste treatment plant for tank lining.

For more chemical resistance information, please refer to Nippon Paint (M) Sdn Bhd, Technical Sales Dept, Protective Coating Division.

# COATING SYSTEM

COATING SYSTEM	PRODUCTS		PRODUCTS	RECOMMENDED SURFACE PREPARATION
NPM 17	Primer Intermediate Finish	Nippon Penetrative Epoxy Primer Nippon EA4 Finish Nippon EA4 Finish	Amidoamine Cured Epoxy Finish Amine adduct cured epoxy finish for floor Amine adduct cured epoxy finish for floor	For new concrete floor, etch with 5% HCL acid, flush with fresh water and let dry.  For old concrete floor, flush with fresh water and let dry.
NPM 18	Primer Finish	Nippon 300 High Temperature Primer Nippon 300 High Temperature Finish	Heat resistance silicone acrylic based primer Heat resistance silicone acrylic finish	Sa 2.5 or SSPC-SP 10/St3
NPM 19	Primer Finish	Nippon 600 High Temperature Primer Nippon 600 High Temperature Finish	Heat resistance silicone based primer Heat resistance silicone finish	Sa 2.5 or SSPC-SP 10/St3
NPM 20	Finish	Nippon Protective Acrylic Finish	Acrylic	SSPC-SP 1
NPM 21	Primer Intermediate Finish	Nippon 9049/9049 GF Nippon 9049/9049 GF Nippon 9049/9049 GF	Two-pack High Build Epoxy Mastic Two-pack High Build Epoxy Mastic Two-pack High Build Epoxy Mastic	Sa 2.5 or SSPC-SP 10 /St3
NPM 22	Primer Intermediate Finish	Nippon 9049/9049 GF Nippon 9049/9049 GF Nippon Polyurethane Recoatable Finish	Two-pack High Build Epoxy Mastic Two-pack High Build Epoxy Mastic Two-pack Aliphatic PU Finish	Sa 2.5 or SSPC-SP 10/St3



RECOMMENDED DRY FILM THICKNESS IN MICRONS	TYPES OF SUBSTRATE												
	FOR NEW PAINTING SYSTEM	FOR REPAINTING SYSTEM	STEEL STRUCTURE - EXTERIOR	STEEL STRUCTURE - INTERIOR	GALVANISED STEELWORK (GI) - EXTERIOR	GALVANISED STEELWORK (GI) - INTERIOR	CERAMIC ROOF TILE / METAL ROOFING - EXTERIOR	CERAMIC ROOF TILE / METAL ROOFING - INTERIOR	INTERNAL TANK COATING	MASONRY - EXTERIOR	MASONRY - INTERIOR	CONCRETE FLOOR (INTERIOR)	STEELWORK (HIGH TEMPERATURE)
30													
75	•	•											
75													
30													
2x30	•											•	
30													
2x30	•											•	
2x40	•				•	•	•			•			
125													
125	•	•		•		•							
125													
125													
125	•	•	•	•	•	•							
50													

## ADDITIONAL INFORMATION

For more detailed procedure on epoxy floor coating, please refer to Nippon Paint (M) Sdn Bhd, Technical Sales Dept, Protective Coating Division.

Can withstand temperature up to 300°C.

Can withstand temperature up to 600°C.

Single coating system recommended for application on galvanised telecommunication or power transmission towers.

Epoxy Finish is not recommended for exterior exposure service condition due to its natural tendency to chalk under sunlight (UV).

For more chemical resistance information, please refer to Nippon Paint (M) Sdn Bhd, Technical Sales Dept, Protective Coating Division.

FOR MORE TOTAL COATING SOLUTIONS BY NIPPON PAINT, VISIT  
**WWW.PROFESSIONAL.NIPPONPAINT.COM.MY**



**THE  
COATINGS  
EXPERT®**

**NIPPON PAINT (M) SDN. BHD.** (196701000578)

Lot I-17, Taman Perindustrian Subang Utama, Jalan SU 4,  
40300 Shah Alam, Selangor Darul Ehsan, Malaysia.

☎ 1-800-88-2663 ✉ [customercare@nipponpaint.com.my](mailto:customercare@nipponpaint.com.my)

🏠 [www.nipponpaint.com.my](http://www.nipponpaint.com.my) | [professional.nipponpaint.com.my](http://professional.nipponpaint.com.my)